



TREMITHOUSA GARDENS

TREMITHOUSA GARDENS



CYPRUS |

AT A GLANCE

- CAPITAL NICOSIA
- GOVERNMENT PRESIDENTIAL REPUBLIC
- AREA 9,251 km²
- POPULATION 900,000 (2015)
- TIME ZONE EET (UTC +2)
- CURRENCY EURO
- EU MEMBER SINCE 2004



TRAVELLING DISTANCES FROM PAPHOS (BY CAR)

- POLIS 35 minutes
- PISSOURI 25 minutes
- LIMASSOL 40 minutes
- LARNACA 1 hour 20 minutes
- AYIA NAPA 1 hour 50 minutes
- NICOSIA 1 hour 30 minutes
- TROODOS 1 hour 15 minutes



Paphos

Everything in one place

For those who enjoy the good things in life, then this inspirational environment is everything one could hope for.

The island of Cyprus, and Paphos in particular, has an established reputation for diversity. Paphos boasts bustling streets with couture stores and cafes just minutes from historic ruins and the hypnotizing waters of the Mediterranean washing gently on the golden shores. More importantly, all this is within effortless reach from **TREMITHOUSA GARDENS**.









Paphos

There are many reasons why Paphos is a favourable destination

- Cultural Capital of Europe 2017
 - Cosmopolitan lifestyle
 - 340 days of sunshine
 - Rich in culture and history
 - English widely spoken
 - Blue flag awarded beaches
 - Safe and friendly environment
 - Great nightlife
 - Wide range of entertainment and outdoor excursions
 - Short distances to amenities and services
 - Shopping malls with international brands
 - International 18-hole championship golf courses
 - International Airport with more than 170 flights a week from major destinations
 - The largest number of hotels and resorts on the island
 - Business opportunities
 - Public and private educational institutions
 - Business centre for large corporations
-

TREMITHOUSA GARDENS

PROJECT SUMMARY

Tremithousa Gardens offers you the ideal home in Cyprus. The development has been designed carefully ensuring that the look, feel and exclusivity of the project is not compromised. Spacious areas, landscaped gardens with private swimming pools and allocated parking areas are a few of the features which contribute to the five-star rating of this development. Tremithousa Gardens consists of 13 seaview three-bedroom villas and is located in the Tremithousa area of Paphos with a strong traditional cultural atmosphere, the surrounding residents are of a higher level.

The natural friendliness of the locals and the slower pace of life are just part of the unique charm of the village close to Paphos Town and its amenities including colorful nightlife, glorious sandy beaches, lush, green and a plethora of relaxed restaurants.

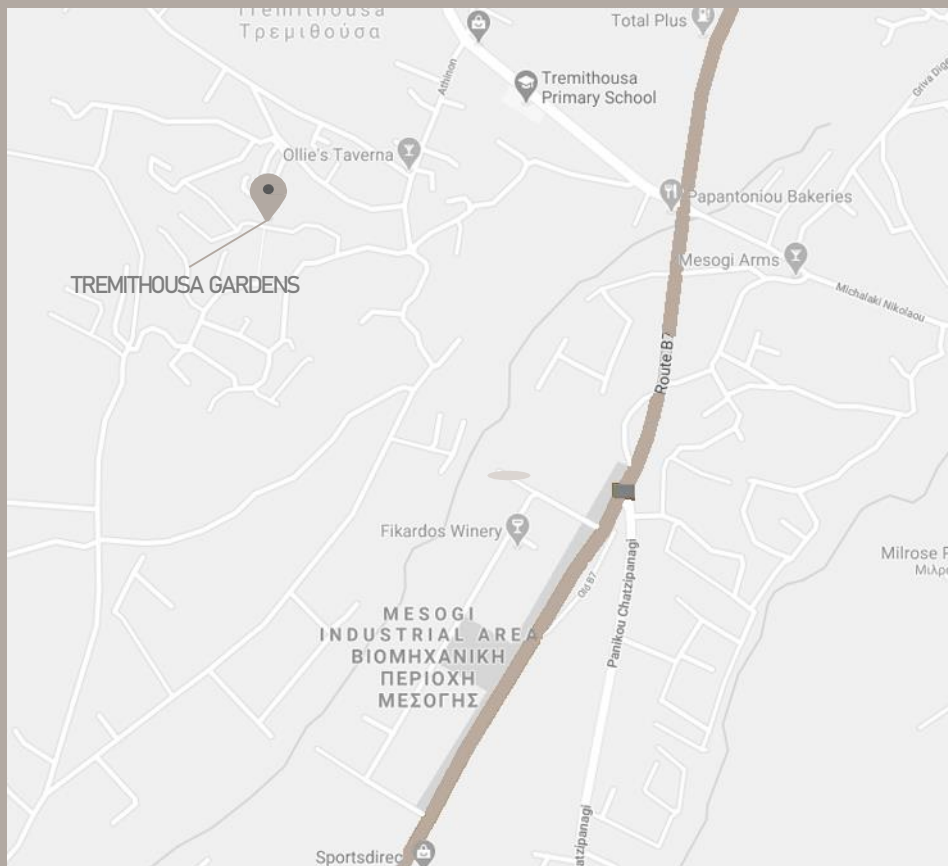
This development is within easy access to the highway, linking it to all major towns in Cyprus. Tremithousa Gardens is also located within close proximity to the Paphos International Airport.

With its all rich characteristic and ideal location, Tremithousa Gardens is another comfortable investment you can make when purchasing your new home in Cyprus.









THE LOCATION



PAPHOS AIRPORT
25 MINUTES



MEDICAL FACILITY
7 MINUTES



INTERNATIONAL SCHOOL
3 MINUTES



SHOPS & STORES
4 MINUTES



PAPHOS CENTRE
7 MINUTES



BEACH
10 MINUTES

TREMITHOUSA GARDENS

COASTAL VILLAS / SUMMARY

PROPERTIES SUITABLE FOR
PERMANENT RESIDENCY
AND EU CITIZENSHIP



NUMBER OF VILLA	13
NUMBER OF VILLA TYPES	5
BEDROOMS	3
TOTAL COVERED AREAS	156M ² – 191M ²

TREMITHOUSA GARDENS

The information presented herein is to be used for reference purposes only and is non-contractually binding. The Vendor reserves the right for any changes at the Vendor's sole discretion. Architectural plans valid on a purchase are those issued for inclusion in the sales agreement.

Master Plan

TREMITHOUSA GARDENS



HOME

Modern and elegant are a few attributes to describe 'TREMITHOUSA GARDENS' which are best suitable for permanent residence due to their location. These features also ensure new comers that their move to Cyprus is in the right place.

TREMITHOUSA GARDENS offers, a selection of 3 bedroom villas. These splendid residences feature open plan layouts and contemporary finishes. Each home benefits from spacious rooms and living spaces combined with all the luxuries of modern lifestyle.





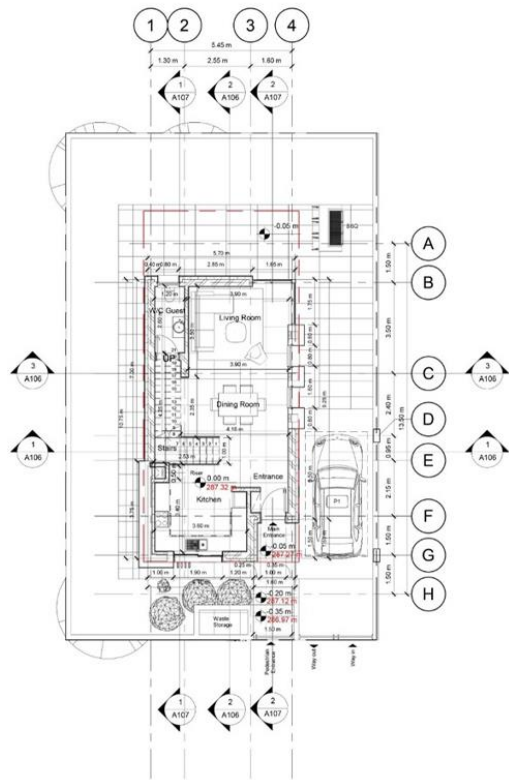




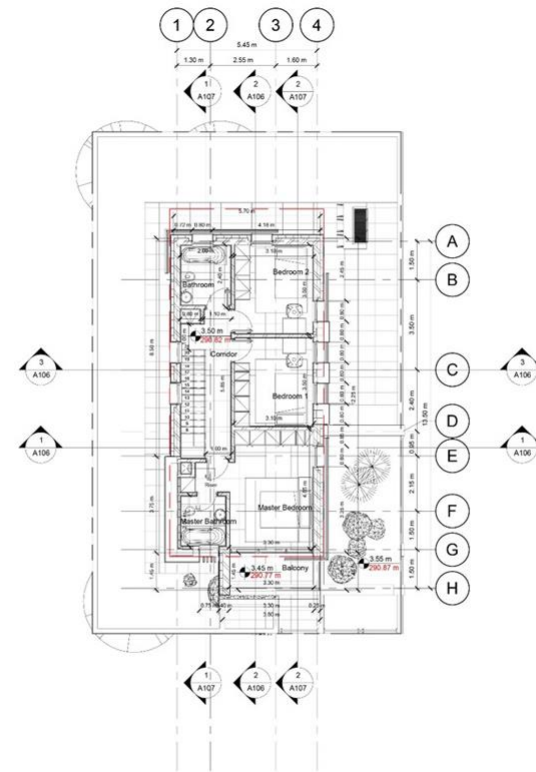
FLOOR PLANS TYPE: A,B,C,D

3 BEDROOMS VILLAS

TREMITHOUSA GARDENS



Level 0 FFL



Level 1 FFL

VILLA TYPE A | 3 BEDROOMS VILLAS
H1, H2, H6, H7, H8

TREMITHOUSA GARDENS



Property number	Type	Bed	Bath	Covered Area	Covered Veranda	Total Covered Area	Plot Area
H1	A	3	3	127	6.43	133.43	221
H2	A	3	3	127	6.43	133.43	172
H6	A	3	3	127	6.43	133.43	178
H7	A	3	3	127	6.43	133.43	170
H8	A	3	3	127	6.43	133.43	188

VILLA TYPE B,C | 3 BEDROOMS VILLAS
H3, H4, H5

TREMITHOUSA GARDENS



Property number	Type	Bed	Bath	Covered Area	Covered Veranda	Total Covered Area	Plot Area
H3	B	3	3	125	11	136	174
H4	C	3	3	125	6.65	131.65	163
H5	B	3	3	125	11	136	168

VILLA TYPE D | 3 BEDROOMS VILLAS
H9, H10

TREMITHOUSA GARDENS

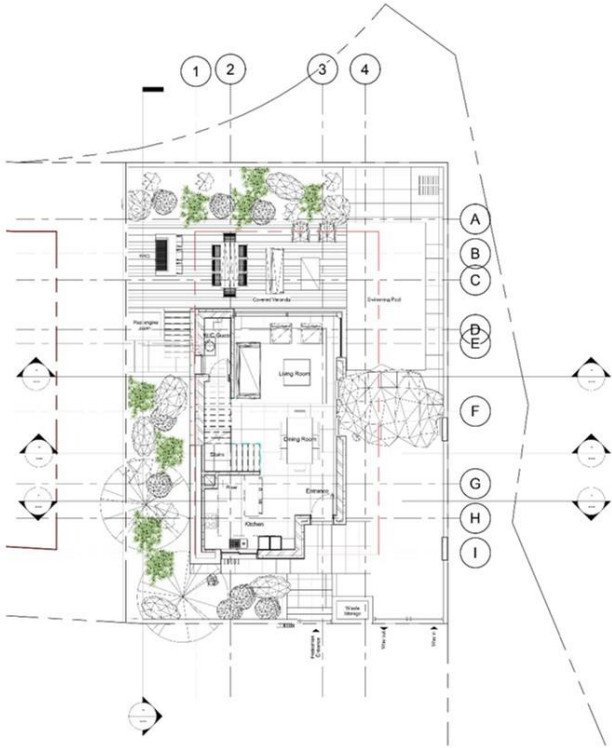


Property number	Type	Bed	Bath	Covered Area	Covered Veranda	Total Covered Area	Plot Area
H9	D	3	3	124	13	137	255
H10	D	3	3	124	13	137	171

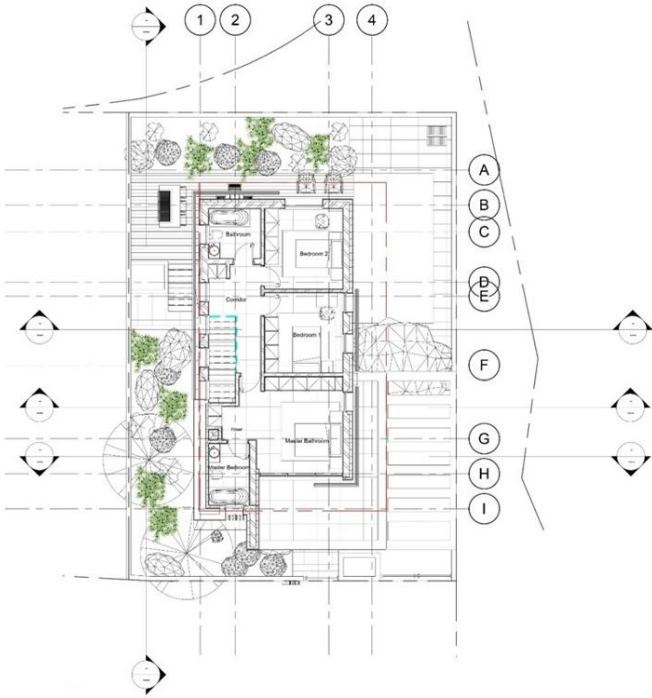
FLOOR PLANS TYPE: E

3 BEDROOMS VILLAS

TREMITHOUSA GARDENS



Level 0 FFL



Level 1 FFL

VILLA TYPE E | 3 BEDROOMS VILLAS
V1, V2, V3

TREMITHOUSA GARDENS



Property number	Type	Bed	Bath	Covered Area	Covered Veranda	Total Covered Area	Plot Area	Pool
V1	E	3	3	142	25	167	280	3.50 x 6.50
V2	E	3	3	142	25	167	276	3.50 x 6.50
V3	E	3	3	142	25	167	272	3.50 x 6.50

ATEX
DEVELOPERS

TREMITHOUSA GARDENS

ATEX
DEVELOPERS

Nikokleous, 2, Agia Zoni 35, 3027, Limassol, Cyprus

Mesogis, 132, 8280, Paphos, Cyprus

www.atexdevelopers.com

Hotline: +357 7007 17 17