

The background is a light-colored, marbled pattern with soft, flowing streaks of blue, green, and yellow. The overall effect is a subtle, organic texture.

BLUE BAY

CYPRUS

A Mediterranean island at the crossroads of three continents, Europe, Asia and Africa; a place where East meets West.

Cyprus has a very rich and diversified culture and history; It is believed to be one of the oldest in the world, dating back 9000 years.

With around 320 days of warm sunshine a year, endless rugged coastline and stunning natural beauty, Cyprus is an earthly paradise.

A member of the European Union since 2004, with a favourable taxation system, superb infrastructure and an enviable lifestyle, these are just a few reasons that Cyprus attracts a lot of visitors and foreign investors.

With one of the lowest crime rates in Europe, excellent medical care and the genuine warmth and hospitality of the locals, it is the ideal place to reside.



PAPHOS

THE CITY OF CULTURE

Paphos is the jewel of Cyprus, with a mild climate, and natural beauty - mountains dipping into crystal clear waters and gentle hills sloping into deserted bays. The relaxed tempo of life offers visitors and residents a tranquility and peace few places in the world can offer.

Paphos is a diverse region offering a cosmopolitan holiday resort, spectacular countryside and historical sites. Its archaeological legacy is such that UNESCO put the whole town on its World Cultural Heritage list. The city of Paphos was selected as the European Capital of culture of 2017.

Enjoy its unique picturesque harbor and admire the 13th century medieval fort which dominates the harbor wall and the intricate floor mosaics in villas dating back to the Roman period depicting scenes from Greek mythology, considered amongst the finest in the Eastern Mediterranean. The district includes many Blue Flag beaches with the two most famous being the golden sands of Coral Beach and the rugged shores at Petra Tou Romiou where legend has it that the mythological Goddess Aphrodite was born out of the waves.

All in all Paphos has something for everyone – lifestyle, sandy beaches, nature, culture, bustling nightlife, fine dining and a friendly atmosphere which makes people return year after year. Its International Airport handles flights from all major destinations and is just minutes away from town.





“Invest in Cyprus
Invest in your Future”



CHLORAKA VILLAGE

It is situated to the West of Paphos District three kilometers from the town. It is specifically located in a valley with a view towards the horizon which is lost in the Mediterranean sea.

It is a place with beautiful beaches and intense opposites. With ancient and modern buildings, natural environment and culture which combines Greece, Europe and Middle East with hotels, restaurants, bars, coffee shops as well as hospitable residents. Its main characteristics are its beaches with their secluded rocks, the clear blue water and its golden beaches. The whole village is a balcony to the Mediterranean with rocky slopes, termite trees and green fields. It is a decoration with a lot of history and famous people.

As the neighbor with Kissonerga village, its community became more popular with the main arterial trade Kings Road straight from the heart of tourist areas to Coral Bay whereas the expected new and biggest Marina of Cyprus would be developed with berth for more than 1000 luxury cruises, attracting a significant valuable investment in real estate and business activities developments for the whole Paphos District.

It is a perfect location which never loses its charm and investment values.





BLUE BAY

These deluxe beach villas consist of lavish three plus one bedroom villas with spacious rooms and functional living areas. Complemented by a stream of high quality finishes and specifications, BLUE BAY ensures comfort and elegance with convenience on one's doorstep.

BLUE BAY is luxurious city villas located in Chloraka area of seven luxury villas with a private swimming pool each. Set in a desirable, sought-after beachfront location in Chloraka, Paphos, this development offers awe-inspiring views of the Mediterranean and easy access to a plethora of all amenities and services, blue flag beaches, hotels and resorts, international golf courses, entertainment venues and shopping malls and places of interest.









NEARBY ALL CITY AMENITIES



**Centre
5 min**



BEACH: 1 MIN

**Cafe / Restaurants
2 min**



CENTRE: 5 MINS



SCHOOLS: 3 MINS



CAFÉ/ RESTAURANTS
2 MINS



PUBLIC HOSPITAL
7 MINS



PAPHOS
INTERNATIONAL
AIRPORT 20 MINS

**Beach
1 min**

BLUE BAY

**Supermarket
200 m**

**Playground
100 m**

**School
3 min**

**5* Hotels
1 min**



The information presented herein is to be used for reference purposes only and is non-contractually binding. The Vendor reserves the right for any changes at the Vendor's sole discretion. Architectural plans valid on a purchase are those issued for inclusion in the sales agreement.



The information presented herein is to be used for reference purposes only and is non-contractually binding. The Vendor reserves the right for any changes at the Vendor's sole discretion. Architectural plans valid on a purchase are those issued for inclusion in the sales agreement.

BLUE BAY

COASTAL VILLAS/ SUMMARY

PROPERTIES SUITABLE FOR
PERMANENT RESIDENCY



NUMBER OF VILLAS	7
BEDROOMS	3 + 1
TOTAL AREAS	155 sqm
PLOT AREAS	> 400 sqm

The information presented herein is to be used for reference purposes only and is non-contractually binding. The Vendor reserves the right for any changes at the Vendor's sole discretion. Architectural plans valid on a purchase are those issued for inclusion in the sales agreement.

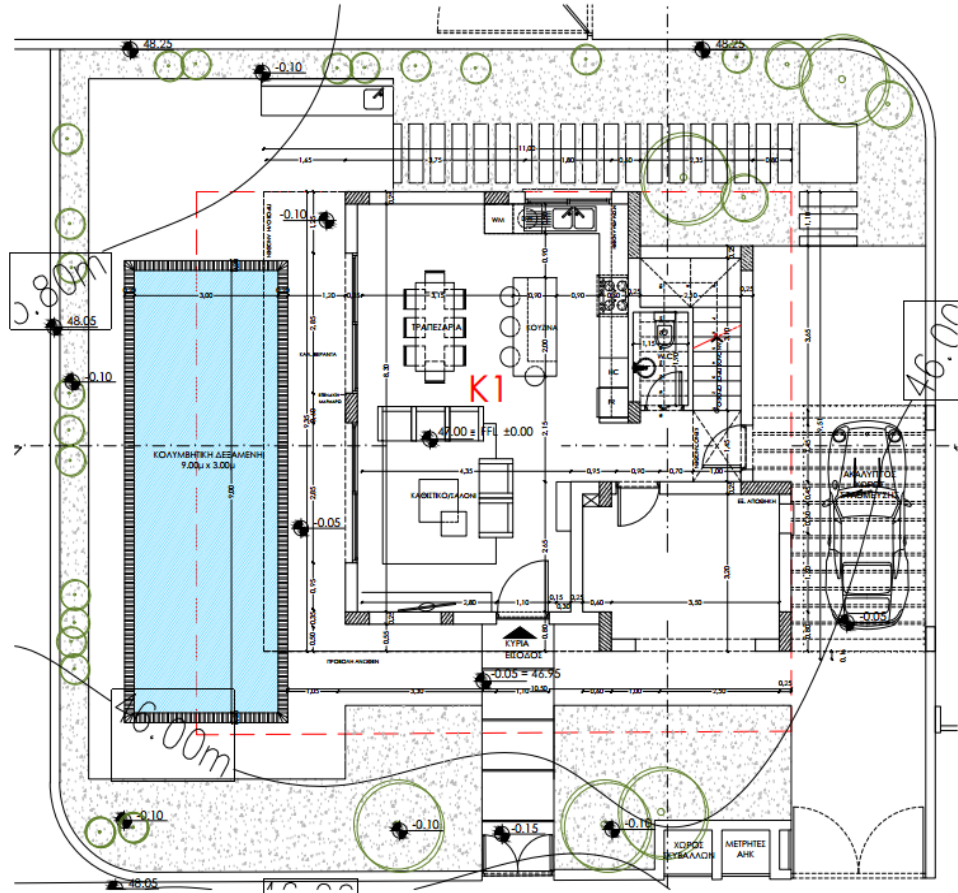
BLUE BAY

MASTER PLAN

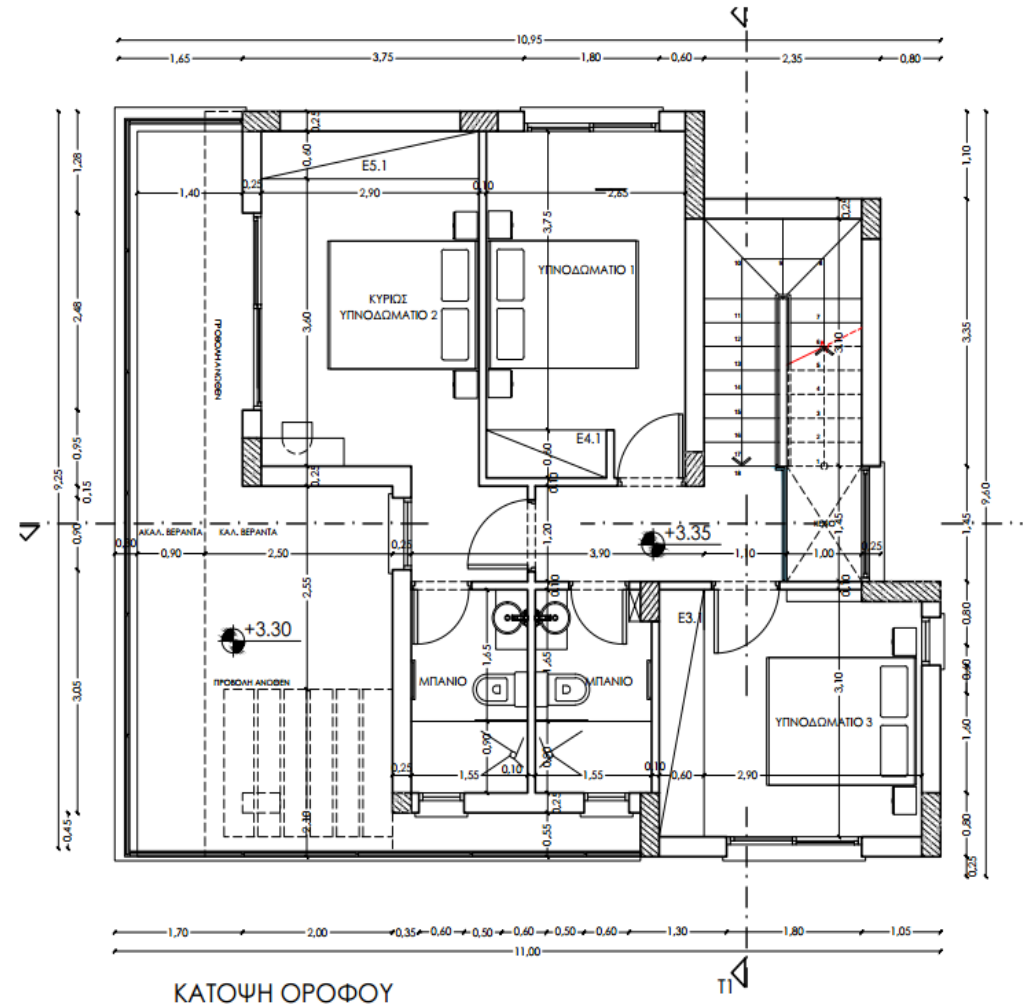


BLUE BAY

FLOOR PLANS



GROUND FLOOR



ΚΑΤΟΨΗ ΟΡΟΦΟΥ

FIRST FLOOR

BLUE BAY

AVAILABLE UNITS

Property number	Type	Bed	Bath	Pool	Internal Cov. Area (m2)	Covered Veranda (m2)	UnCov. Veranda (m2)	Cov. Parking (m2)	Total Cov. Area (m2)	Plot Area (m2)	Status	Delivery Time
K1	Villa	3 + 1	3	4 * 8	103,00	33.00	12.00	18.50	154.50	400.00	Available	24 months
K2	Villa	3 + 1	3	4 * 8	103,00	33.00	12.00	18.50	154.50	400.00	Available	24 months
K3	Villa	3 + 1	3	4 * 8	103,00	33.00	12.00	18.50	154.50	400.00	Available	24 months
K4	Villa	3 + 1	3	4 * 8	103,00	33.00	12.00	18.50	154.50	400.00	Available	24 months
K5	Villa	3 + 1	3	4 * 8	103,00	33.00	12.00	18.50	154.50	400.00	Available	24 months
K6	Villa	3 + 1	3	4 * 8	103,00	33.00	12.00	18.50	154.50	400.00	Available	24 months
K7	Villa	3 + 1	3	4 * 8	103,00	33.00	12.00	18.50	154.50	400.00	Available	24 months

BLUE BAY

ATEX
DEVELOPERS

Agia Zoni 35, 3027, Limassol, Cyprus

www.atexdevelopers.com

Hotline: +357 7007 17 17