



LAVENDER HILL

CYPRUS

A Mediterranean island at the crossroads of three continents, Europe, Asia and Africa; a place where East meets West.

Cyprus has a very rich and diversified culture and history; It is believed to be one of the oldest in the world, dating back 9000 years.

With around 320 days of warm sunshine a year, endless rugged coastline and stunning natural beauty, Cyprus is an earthly paradise.

A member of the European Union since 2004, with a favourable taxation system, superb infrastructure and an enviable lifestyle, these are just a few reasons that Cyprus attracts a lot of visitors and foreign investors.

With one of the lowest crime rates in Europe, excellent medical care and the genuine warmth and hospitality of the locals, it is the ideal place to reside.



PAPHOS

THE CITY OF CULTURE

Paphos is the jewel of Cyprus, with a mild climate, and natural beauty - mountains dipping into crystal clear waters and gentle hills sloping into deserted bays. The relaxed tempo of life offers visitors and residents a tranquility and peace few places in the world can offer.

Paphos is a diverse region offering a cosmopolitan holiday resort, spectacular countryside and historical sites. Its archaeological legacy is such that UNESCO put the whole town on its World Cultural Heritage list. The city of Paphos was selected as the European Capital of culture of 2017.

Enjoy its unique picturesque harbor and admire the 13th century medieval fort which dominates the harbor wall and the intricate floor mosaics in villas dating back to the Roman period depicting scenes from Greek mythology, considered amongst the finest in the Eastern Mediterranean. The district includes many Blue Flag beaches with the two most famous being the golden sands of Coral Beach and the rugged shores at Petra Tou Romiou where legend has it that the mythological Goddess Aphrodite was born out of the waves.

All in all Paphos has something for everyone – lifestyle, sandy beaches, nature, culture, bustling nightlife, fine dining and a friendly atmosphere which makes people return year after year. Its International Airport handles flights from all major destinations and is just minutes away from town.



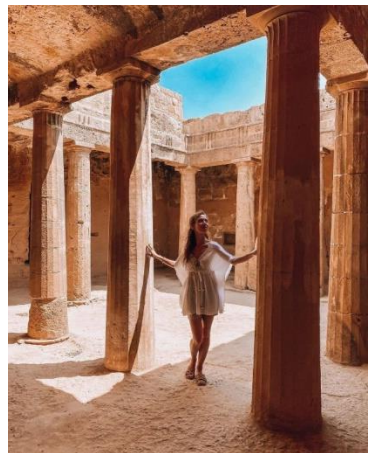


“Invest in Cyprus
Invest in your Future”



TALA HILL

Tala Hill is located approximately 8km north of Paphos, set on a west facing hillside overlooking the calm blue waters of the Mediterranean Sea. The panoramic view, the favorable climate and the simplicity of the landscape are the main characteristics that led to the development of tourism. The area is well known for its cooling summer breezes and as it is situated on higher ground benefits from the less humid air in the hot summer months.



Approximately 10 minutes from the beach, 10 minutes from Paphos town, 3 minutes from the schools, 10 minutes to shopping mall and 30 minutes from the airport, make it the ideal location. Its multiple advantages together with its truly unique location, set in an area where care has been taken to enhance rather than destroy the natural landscape, put Tala Hill at the top of rich people's list.

Tala has a fabulous variety of local amenities including shops & local businesses. A recently renovated traditional village square with bars and restaurants and an amphitheater which holds a range of musical and theatrical events throughout the year is nearby. Tala is within a 20-minute drive from Coral Bay, the well-known beach resort for the Paphos district. This family-oriented area has become a lively resort with plenty to offer in terms of amenities, beaches and activities.



LAVENDER HILL

Lavender Hill is characterized by its delicate stone appearance and superb location with breath taking views of the countryside and Paphos' coastline, located in Tala which is a community, where social life revolves around the events of the town.

It is also an ideal location for those who wish to enjoy natural stunning views and have all the essential amenities, shops, international schools and universities, beaches and entertainment nearby. Due to the elevation of the location, locals experience cool summer evenings and an enjoyable nature and climate. The development has a selection of villas including 3 bedrooms with private infinity pool overflowing, big verandas, beautiful landscape and covered parking.

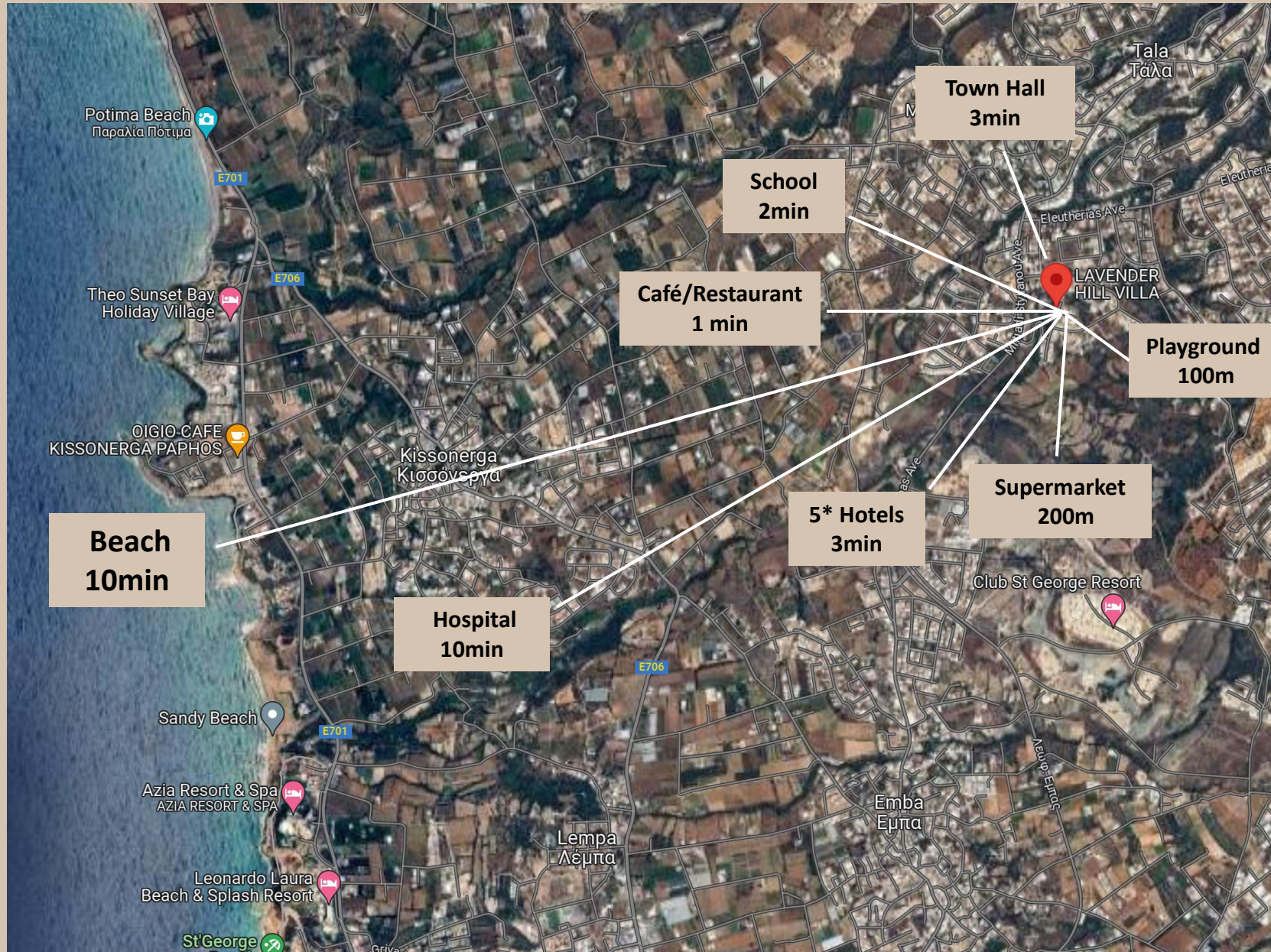


Lavender Hill





NEARBY ALL CITY AMENITIES



BEACH: 10 MIN



TOWN HALL: 3 MIN



SCHOOLS: 2 MIN



CAFÉ/ RESTAURANTS/
SHOPS: 1 MIN



PUBLIC HOSPITAL
10 MIN



PAPHOS
INTERNATIONAL
AIRPORT 30 MIN



The information presented herein is to be used for reference purposes only and is non-contractually binding. The Vendor reserves the right for any changes at the Vendor's sole discretion. Architectural plans valid on a purchase are those issued for inclusion in the sales agreement.







The information presented herein is to be used for reference purposes only and is non-contractually binding. The Vendor reserves the right for any changes at the Vendor's sole discretion. Architectural plans valid on a purchase are those issued for inclusion in the sales agreement.



The information presented herein is to be used for reference purposes only and is non-contractually binding. The Vendor reserves the right for any changes at the Vendor's sole discretion. Architectural plans valid on a purchase are those issued for inclusion in the sales agreement.



The information presented herein is to be used for reference purposes only and is non-contractually binding. The Vendor reserves the right for any changes at the Vendor's sole discretion. Architectural plans valid on a purchase are those issued for inclusion in the sales agreement.



The information presented herein is to be used for reference purposes only and is non-contractually binding. The Vendor reserves the right for any changes at the Vendor's sole discretion. Architectural plans valid on a purchase are those issued for inclusion in the sales agreement.

LAVENDER HILL

SEAVIEW VILLAS/ SUMMARY

PROPERTIES SUITABLE FOR
PERMANENT RESIDENCY

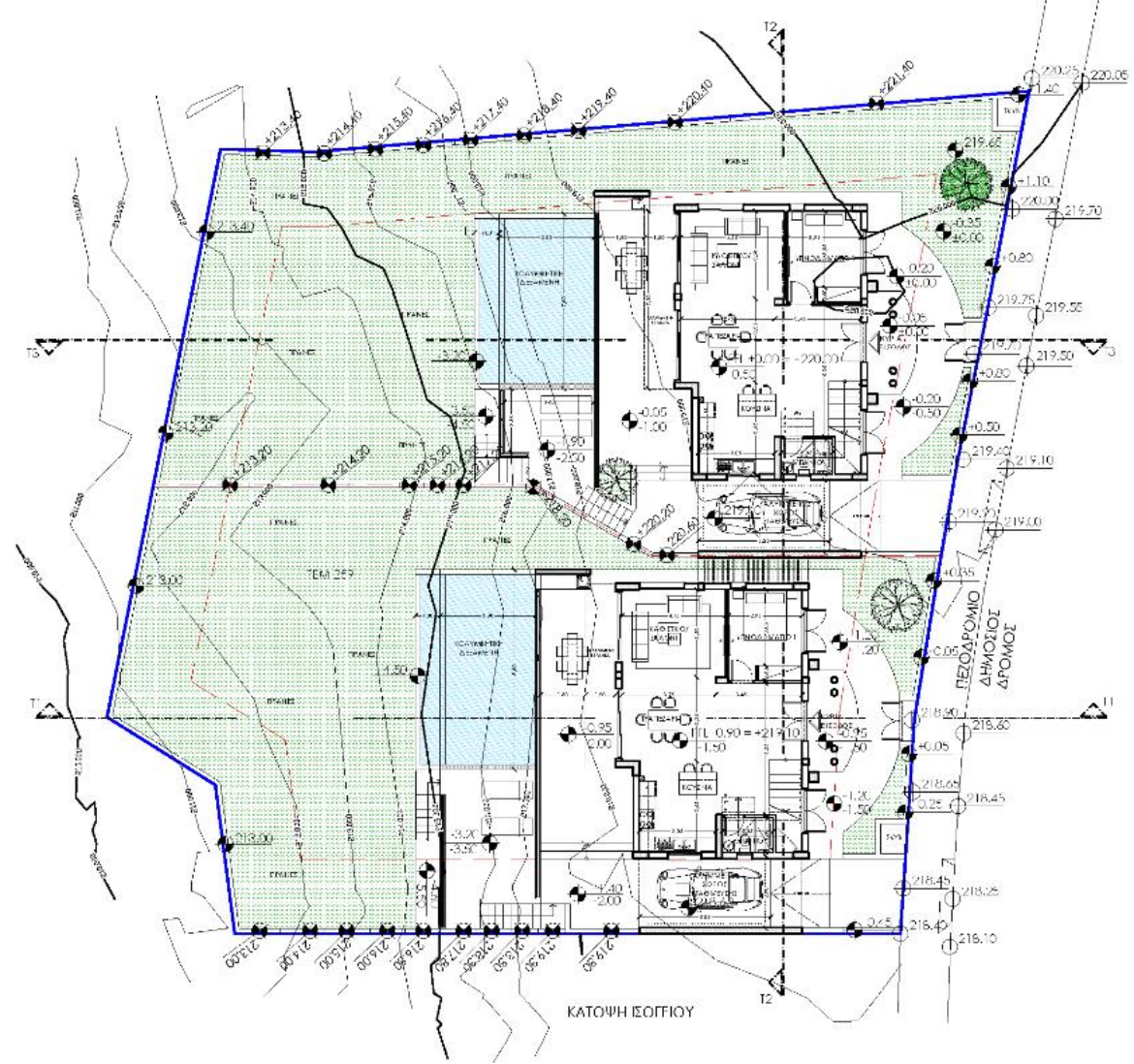


NUMBER OF VILLAS	2
BEDROOMS	3 + 1
TOTAL AREAS	212.90 sqm
PLOT AREAS	~ 500 sqm

The information presented herein is to be used for reference purposes only and is non-contractually binding. The Vendor reserves the right for any changes at the Vendor's sole discretion. Architectural plans valid on a purchase are those issued for inclusion in the sales agreement.

LAVENDER HILL

SITEPLAN



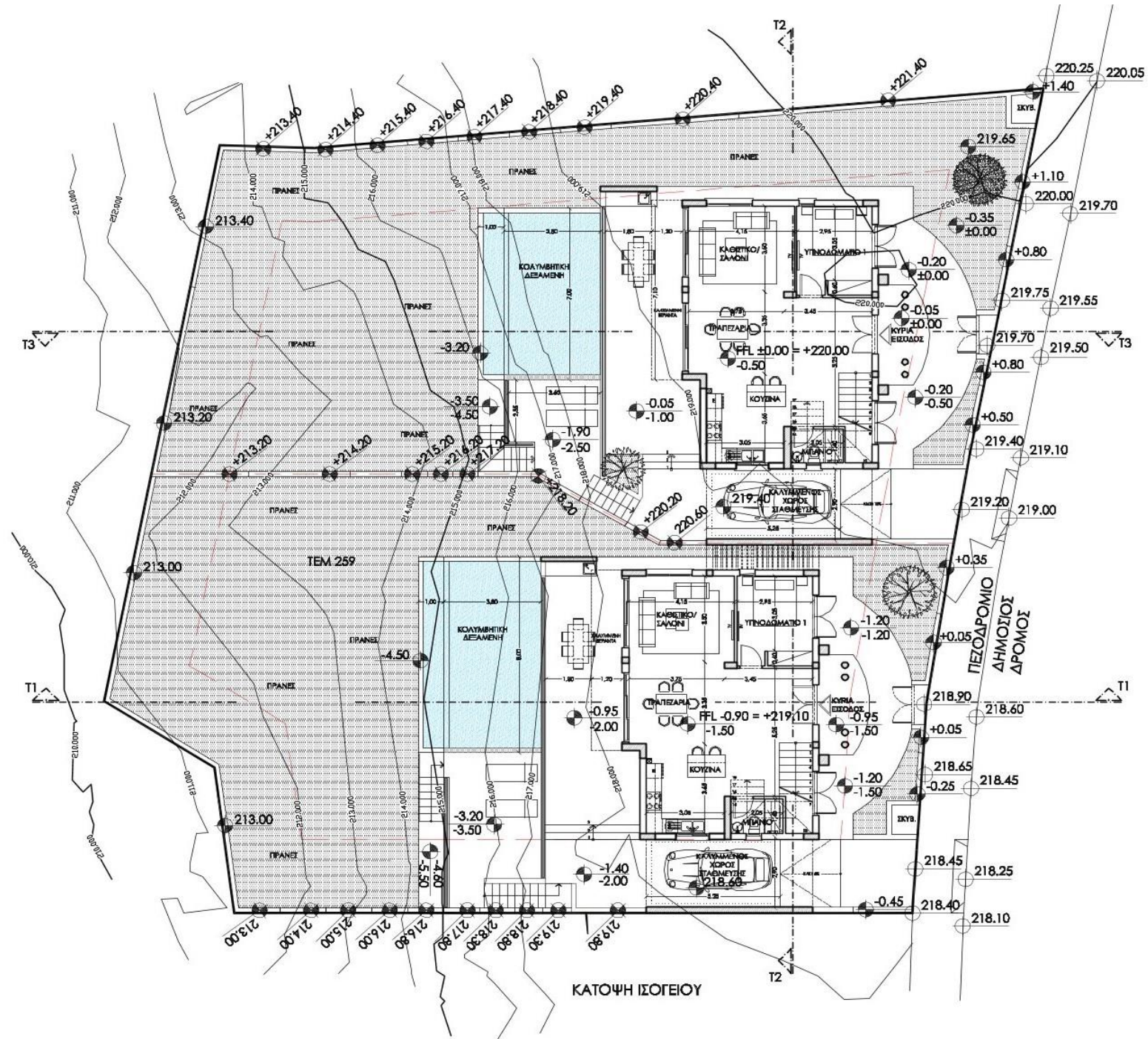
▲ ΠΡΟΒΛΕΠΟΜΕΝΑ ΥΨΟΜΕΤΡΑ
 ● ΦΙΕΤΑΜΕΝΑ ΥΨΟΜΕΤΡΑ
 ▲ ΥΨΟΤΑΜΕΝΑ ΥΨΟΜΕΤΡΑ

ΦΩΤΟΓΡΑΦΙΣ



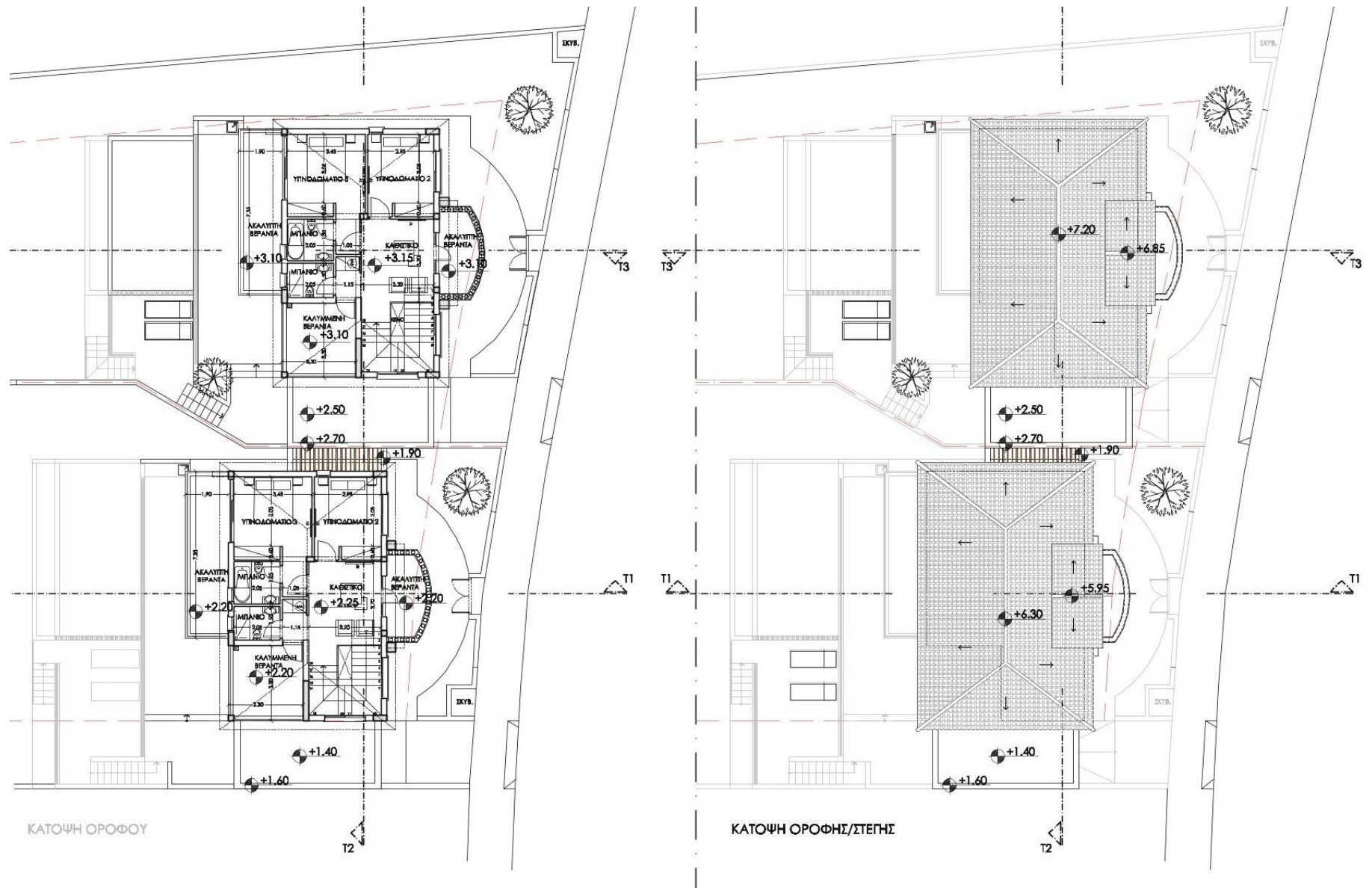
LAVENDER HILL

GROUND FLOOR PLAN



LAVENDER HILL

FIRST FLOOR PLAN



LAVENDER HILL

AVAILABLE UNITS

Property number	Type	Bed	Office	Bath	Pool	Internal Cov. Area (m2)	Covered Veranda (m2)	Uncov. Veranda (m2)	Pergola Parking (m2)	Total Cov. Area (m2)	Plot Area (m2)	Status
K1	Villa	3	1	2+1	yes	147.40	43.30	13.70	22.20	212.90	499.50	SOLD
K2	Villa	3	1	2+1	yes	147.40	43.30	13.70	22.20	212.90	499.50	SOLD

The background is a piece of marbled paper with a light cream or off-white base. It features intricate, flowing patterns of gold, lavender, and pale purple. The colors are blended and streaked together, creating a soft, organic texture. The overall appearance is that of a classic, elegant stationery or book cover design.

LAVENDER HILL